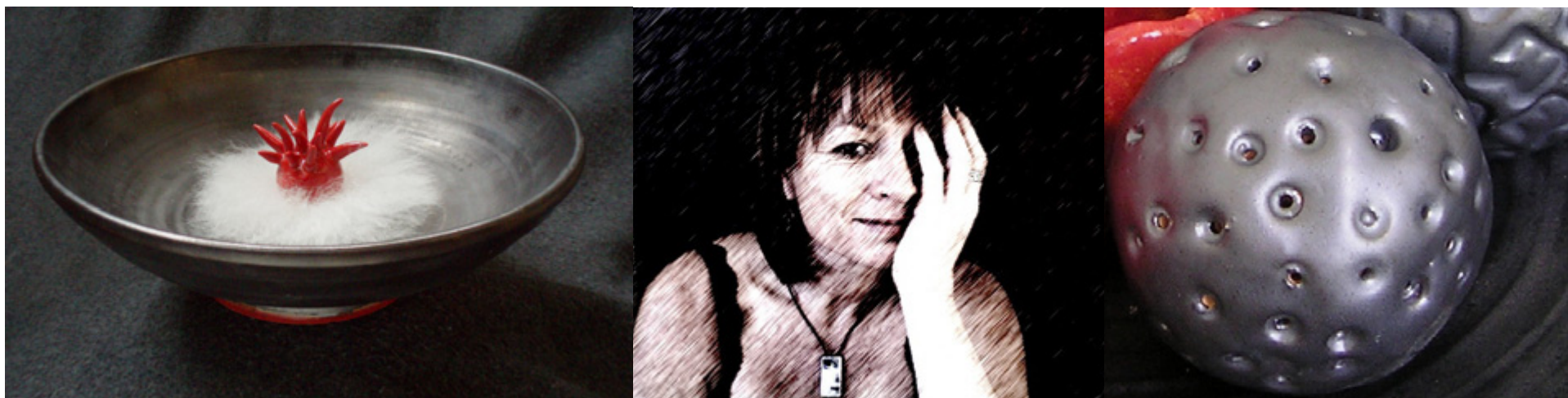




what?

CLAY ART & CURIOS

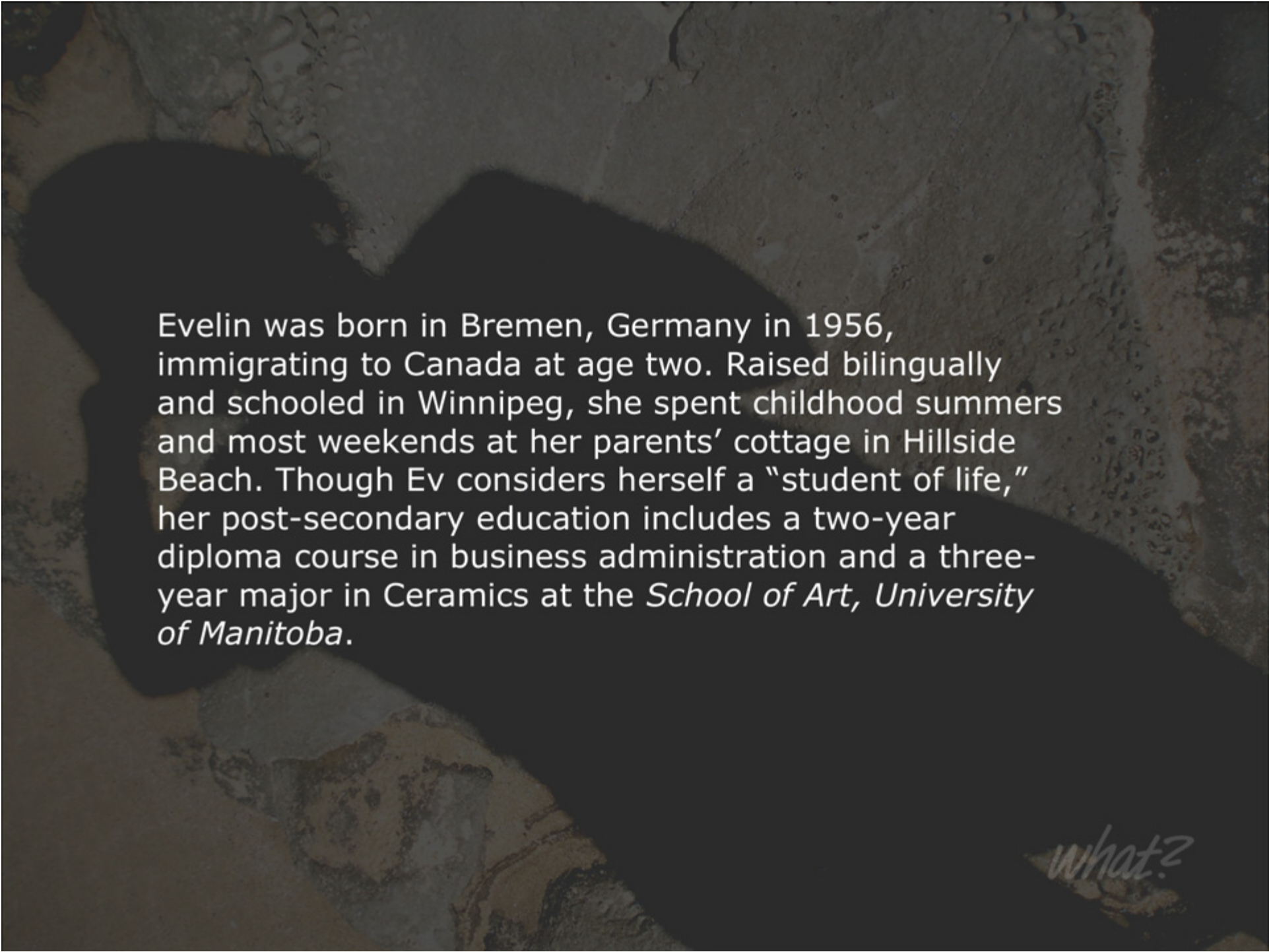


what?

A photograph of a woman with blonde hair, wearing a black t-shirt and a backpack, standing on a sandy beach. She is smiling and waving her right hand. The ocean is in the background with a small wave breaking. The lower half of the image is darkened, showing the woman's legs and shadow on the sand.


Evelin Richter *Biography*

what?



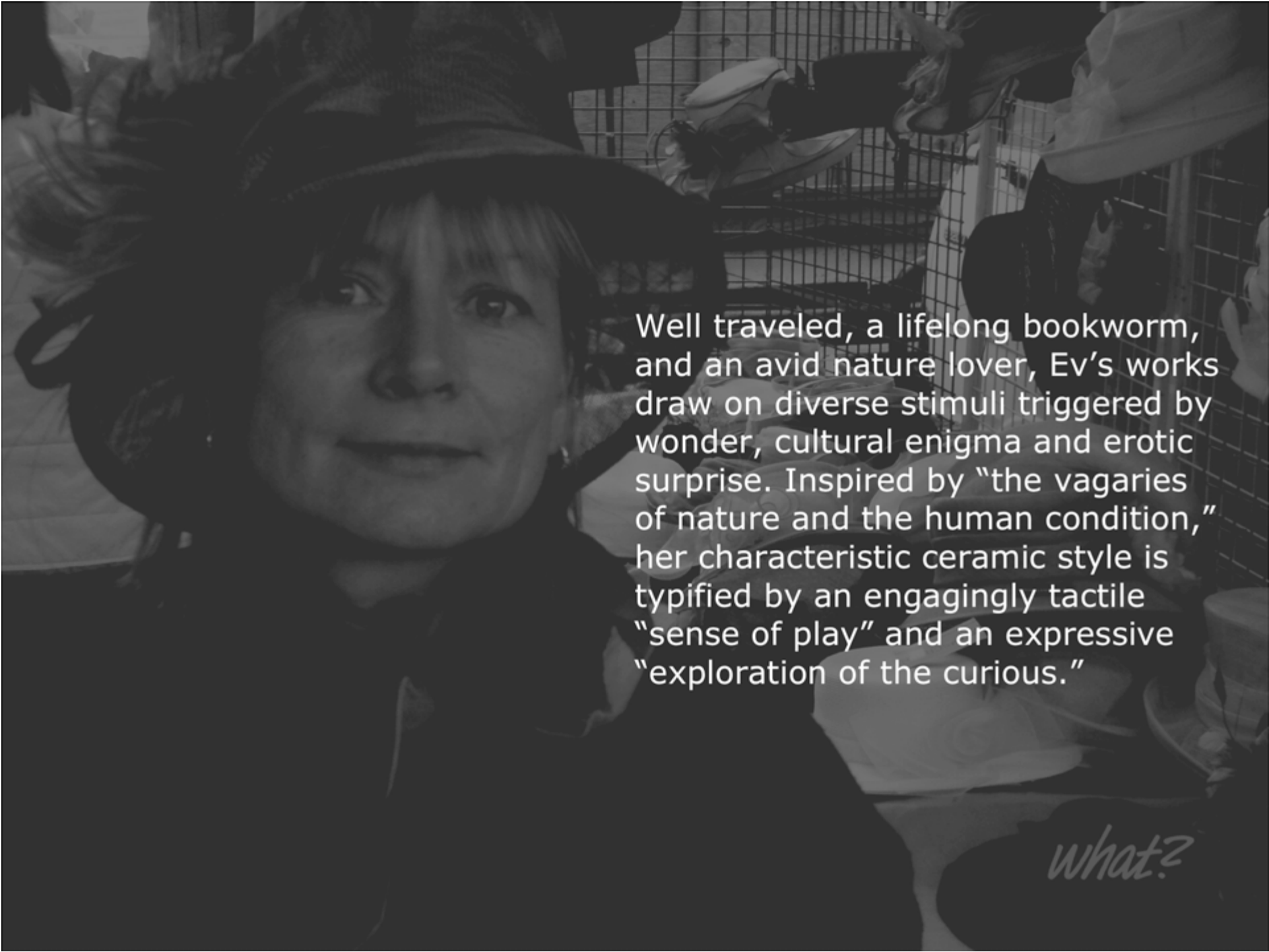
Evelin was born in Bremen, Germany in 1956, immigrating to Canada at age two. Raised bilingually and schooled in Winnipeg, she spent childhood summers and most weekends at her parents' cottage in Hillside Beach. Though Ev considers herself a "student of life," her post-secondary education includes a two-year diploma course in business administration and a three-year major in Ceramics at the *School of Art, University of Manitoba*.

what?




Following a diverse career (primarily in the customer service sector) Ev began working with clay in 1990. She is now a full-time ceramic artist with a home-based studio in Winnipeg Beach, where she works primarily with low-fire glazes and an electric kiln. Ev's creations are in various private collections, she fulfills commissions, and her pieces are available through select galleries.

What?




Well traveled, a lifelong bookworm, and an avid nature lover, Ev's works draw on diverse stimuli triggered by wonder, cultural enigma and erotic surprise. Inspired by "the vagaries of nature and the human condition," her characteristic ceramic style is typified by an engagingly tactile "sense of play" and an expressive "exploration of the curious."

what?



In 2006, Ev founded "*What? Clay Art & Curios*" as a sole proprietorship in order to assist in the further business development and marketing of her creative works. Her main focus lately has been on idiosyncratic box-forms featuring unexpected textural treatments, as well as distinctively tactile objects and multi-medium creations.

what?



In fall of 2006, Ev spent four weeks as a guest artist in ceramics at the *Faculty of Art & Design, Monash University*, in Melbourne, Australia. This opportunity resulted in valuable exchange and promoted experimentation in diverse studio methods and materials.

what?

Tidal Pool Urbane



what?



what?

Tidal Pool Urbane



Basin: 245mm Ø x 85mm
Thrown stoneware with low-fire 04Δ
burnished steel glaze and sea-anemone trim

Art Object: 30mm x 50mm
Hand-built stoneware with low-fire 04Δ
sea-anemone glaze, sheepskin nest-base

what?

Questionable Motive?



what?

Questionable Motive?



Basin: 250mm Ø x 90mm
Thrown stoneware with low-fire 04Δ
burnished steel glaze

Tactile Orbs: approx. 60mm Ø
Hand-built stoneware with low-fire 04Δ
glaze in burnished steel and sea anemone

what?

Phylogenetic Wrap



Vase: 85m Ø x 190mm
Hand-built stoneware with low-fire 04Δ
glaze in burnished steel and sea anemone

what?

Nnnnnipples...



Orb: 60mm Ø
Retro-formed stoneware with low-fire
04Δ glaze in burnished steel

what?

Buttoned Yoke



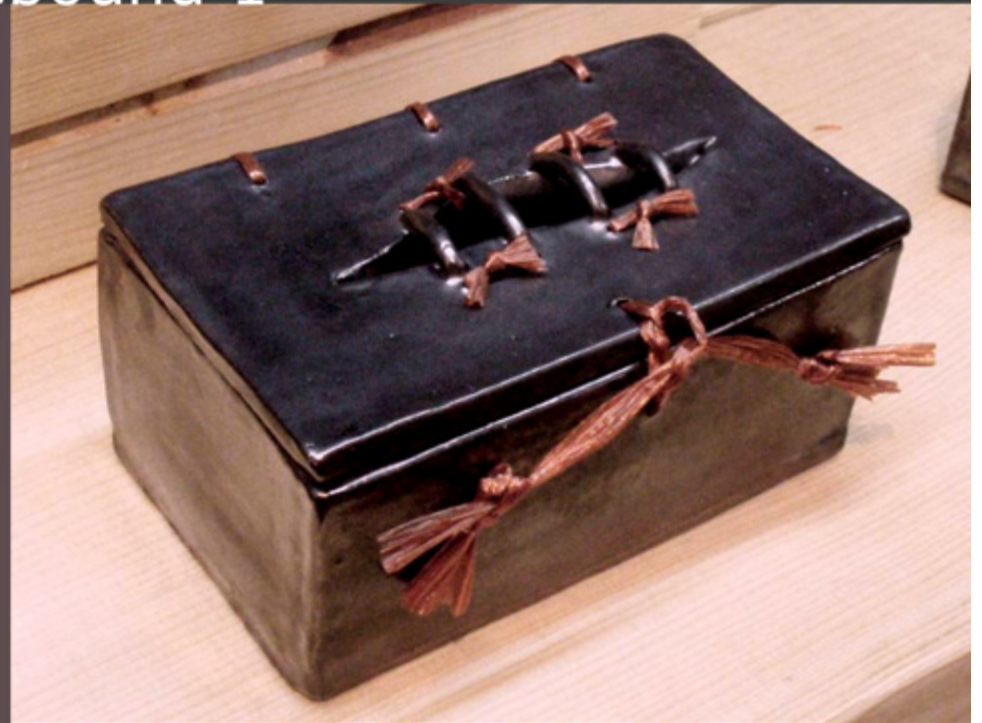
Pedestal Bowl:

85mm Ø base, 340mm Ø top, 140mm high
Hand-built stoneware with low-fire 04Δ
glaze in burnished steel and ruby

what?

Hidebound 1

Box: 120mm x 240mm x 90mm
Hand-built stoneware with low-fire 04Δ
burnished steel glaze, raffia binding



what?

Hidebound 2

Box: 105mm x 95mm x 240mm
Hand-built stoneware with low-fire 04Δ
burnished steel glaze, leather binding

what?



Butch Saucy



Sushi Bowls: 90mm Ø
Retro-formed stoneware with low-fire 04Δ
glaze in burnished steel

what?

Everyman's Ewer



Ewer: 80mm Ø 65mm spout
Hand-built stoneware with carbon trap
glaze gas fired to $\Delta 10$

what?

Domestic Directive



Boxes: Approximately 80mm square
Hand-built stoneware with flashing slip
wood fired to $\Delta 12$

what?

Genmaicha

Teapot: 105mm Ø x 105mm
Thrown stoneware with low-fire 04Δ
glaze in burnished steel, with integral
strainer and bamboo handle



what?



Vessels: Thrown stoneware fired in wood kiln
at approximately $\Delta 13$

what?



Vessels: Thrown stoneware in wood and gas kilns
(at approximately $\Delta 13$ and $\Delta 8$ respectively)

what?



CLAY ART & CURIOS

Evelin Richter

CERAMIST

275 Eaton Street
Winnipeg Beach, MB
Box 561, R0C 3G0 Canada
T +1 204 782 3077
ev@whatclayart.com
www.whatclayart.com

what?

